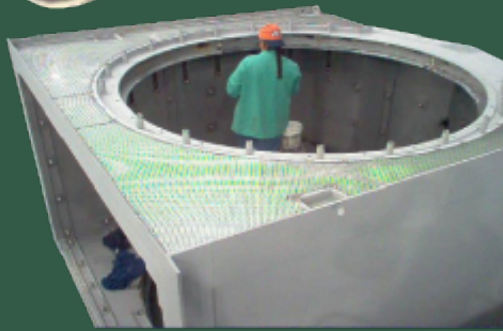
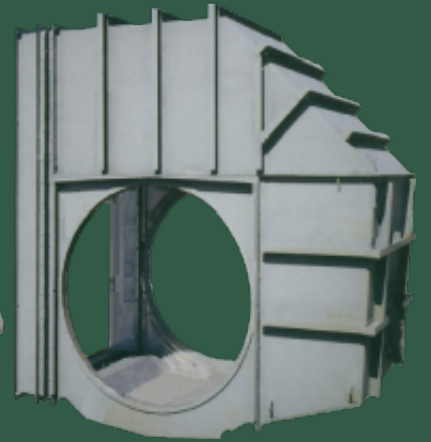
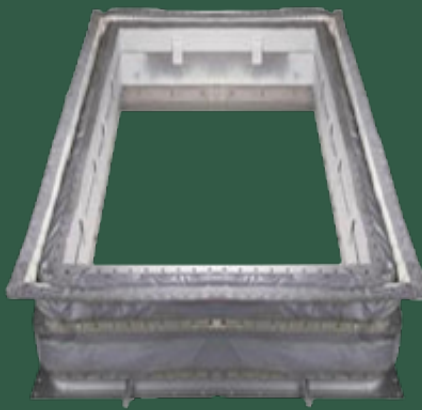


RETROFIT EXHAUST SYSTEMS



**WING
COWL
PLENUMS
EXPANSION JOINTS**



EXHAUST PLENUM DESIGN & FEATURES

FLOATING METAL LINER

- Secured, not fastened, atop insulation, compressed to an optimum density between the outer shell plate and liner plate
- "Floating" eliminates stresses in the liner

EXTERNAL CASING PLATE

- Gas-tight
- Maintained at temperatures only slightly above ambient, eliminating thermal expansion problems

NEW COOLER FLANGE DESIGN

Improvements in flange design in the following joints have dramatically reduced temperatures:

- Plenum to Cowl
- Plenum to Wing (Sidewall)
- Plenum to Wing (Floor)
- Plenum to Expansion Joint
- Wing to Cowl
- Cowl to Expansion Joint

SCALLOP BARS

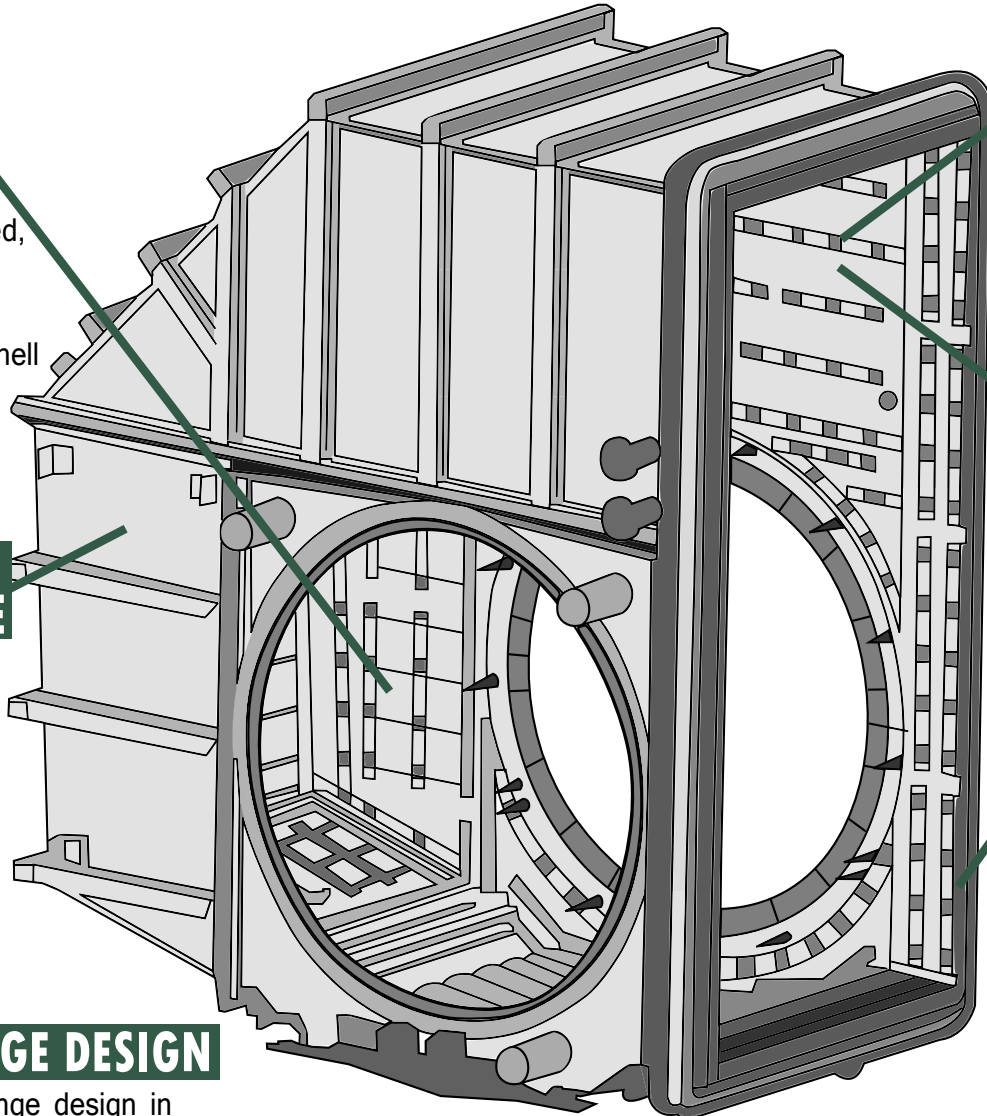
- Holds Liner Sheets in place
- Reduces Heat Transfer to the Outer Shell

SECURED LINER SHEETS

- Expand and contract without great stress and strain
- "Scaled" installation keeps flow from getting underneath the liner sheets

EXPANSION JOINT

- Different sizes and Flex Material fabrics available for the most challenging of environments
- Freestanding & Integrated Expansion Joints available

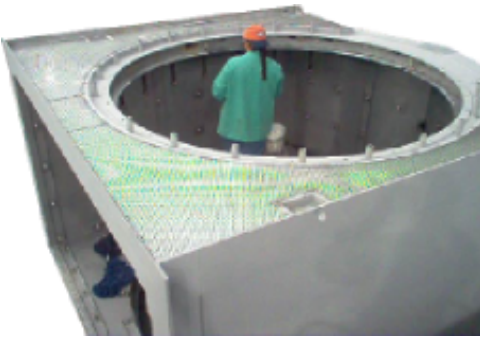


SPECIFICATIONS

EXTERIOR CASING PLATE -
Minimum of 1/4" thick ASTM A36
Carbon Steel
INTERIOR LINER MATERIAL -
ASTM 240 Type 409 Stainless Steel
CERAMIC FIBER INSULATION -
Internal Thickness
REPLACEMENT FLEX SEALS AND
RADIATION TUBES - Standard

Dramatically reducing external heat transfer makes your maintenance easier, your Exhaust System safer, and your plant more efficient

RETROFIT SOLUTIONS FOR ALL PLENUM SIZES



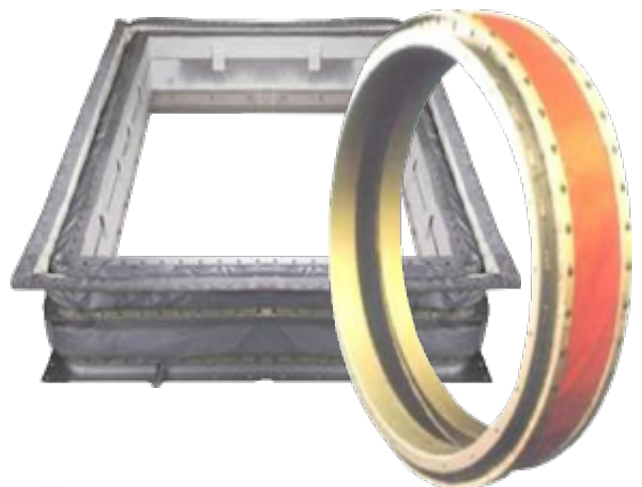
- The Floor Liner is drainable for easy maintenance
- The Exterior Wall is acoustically treated
- The Plenum is designed to be installed with diffuser and turbine rotor in place
- Floating Liner eliminates stress from expansion and contraction
- Cold Flange Design dramatically reduces heat

• INCLUDING GE
FRAME 3, 5, 6, & 7's



EXPANSION JOINTS

DRB Industries provides Expansion Joints, Splice Kits, and materials for most Gas Turbine Exhaust Systems Applications. These State of the Art systems dramatically reduce heat transfer because of our wire mesh, fiberglass, superior cloth, ceramic fiber, & fluoropolymer fabrics. We also supply Splice Kits and high temperature, heat sealing (Splicing Irons), seal film, and high strength adhesive (as needed for your Splicing/ Installation activities).



Contact DRB today for a quote



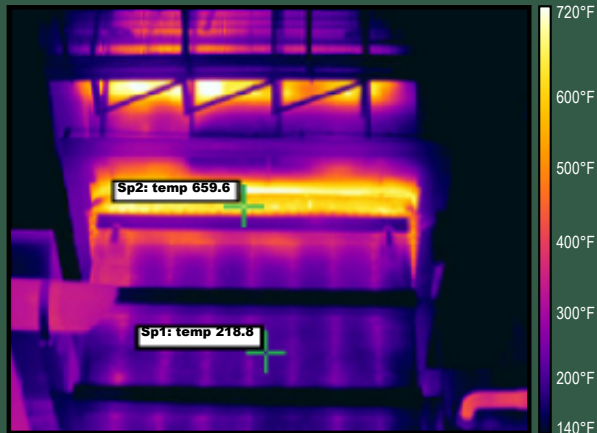
quality . experience . service

Fax: 918.286.7215

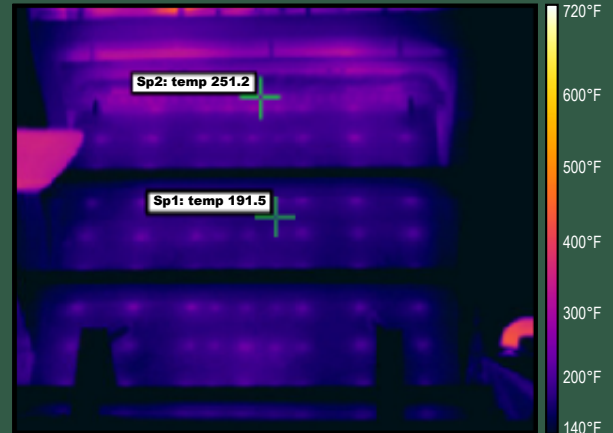
www.drbindustries.com

Most Exhaust Plenums should be replaced one or two times over the lifespan of your Gas Turbine. These before and after thermal images show the improvements expected when you upgrade your exhaust plenum:

Before New Exhaust Installation

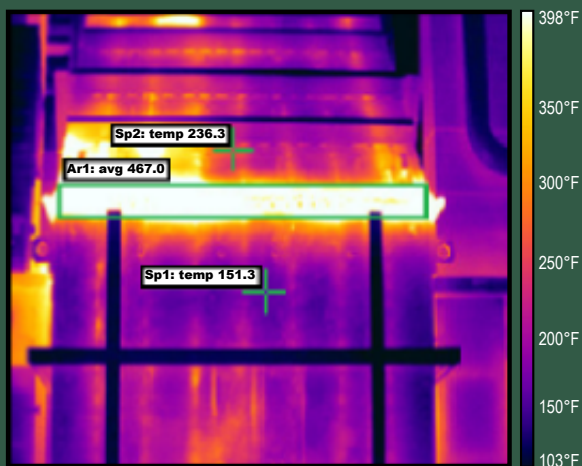


After New Exhaust Installation

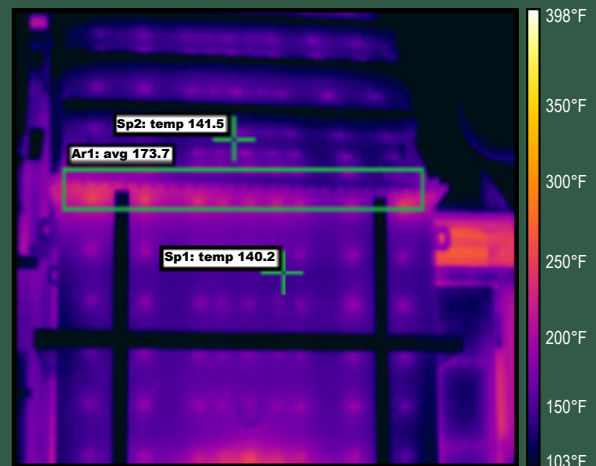


4 Months Later

Before New Exhaust Installation



After New Exhaust Installation



1 Month Later



Phone: 918.286.7176
Fax: 918.286.7215
sales@drbindustries.com
www.drbindustries.com

